



# 100% Oil-Free - Guaranteed

Oil-Free Water-Injected  
Rotary Screw Compressors

**PureAir**  
ISO CLASS: ZERO PLUS SILICONE FREE



Innovative Oil-Free  
Compressed Air Technologies

**D15H-D37H**  
**D15HRS-D37HRS**

Air and Water Cooled

# Guaranteed 100% air purity, that meets stringent quality standards - always

## CompAir - Oil-Free Air is our Passion

As manufacturers and suppliers of oil-free compressors for over 90 years, CompAir is committed to quality and innovation and understanding our customers' operational and business needs. Nowhere is this more apparent than in the development of our DH range.

Our oil-free compressors are helping industries across the globe to meet and exceed quality and production objectives in food and beverage, pharmaceutical, electronic, healthcare and power generation applications to name just a few.

In addition, CompAir are committed to developing environmentally friendly solutions that help our customers meet the demands of climate change legislation - from cutting energy bills and operating more efficiently to reducing their carbon footprint.

### ▶ **Pressure range**

5 to 10 bar

### ▶ **Volume flow**

0.32 to 6.87 m<sup>3</sup>/min

### ▶ **Motor power**

15 to 37 kW

## **Why Oil-Free? Contaminant Free... Risk Free**

When you choose an oil-free DH range compressor from CompAir, you get a clean, reliable and cost-efficient air supply that benefits your business and your bottom line!

Air purity is critical for many applications where even the smallest drop of oil can cause product spoilage or damage production equipment. For this reason, the DH range from CompAir contains absolutely no oil anywhere in the compressor and has been certified ISO 8573-1 Class Zero (2010) and silicone free, making it better and safer with simply no risk of oil contamination.

“ Increasing pressures both commercial and legislative, demand lower environmental impact from your business – issues that our oil-free compressors meet head on.



## CompAir DH - your resource for cost savings

The unique design achieves lower speeds combined with lower operating temperatures - both resulting in high efficiency and reduced component wear. Using a single-stage, direct-driven motor without gears or belts, maximises efficiency. Limiting the compressed air to the application demand with regulated speed ensures that no energy is wasted.

**PureAir**  
ISO CLASS: ZERO PLUS SILICONE FREE

# CompAir DH - delivering the highest quality, oil-free compressed air for all applications

## DH - advanced compression technology from CompAir

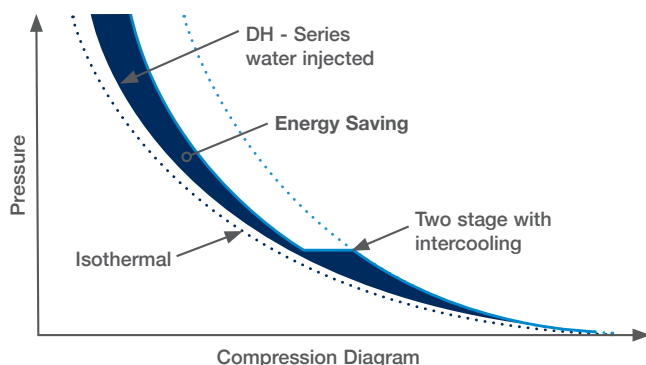
The use of absolutely no oil negates the issues of contaminated air. **No oil - no risks.**

- Single-stage, direct-driven compression element **maximises efficiency** and **minimises maintenance**
- **High quality water injection** lubricates, cools and seals the compression process, maximising efficiency
- **No gearbox** means no need for associated oil lubrication
- Low bearing loads and low speeds mean **sealed-for-life bearings** can be used, requiring no oil lubrication
- Regulated speed technology available to **reduce energy costs**
- Comprehensive control **ensures safe** and **reliable operation** and includes remote communication capability
- Fully packaged and silenced enclosure **reduces noise** and simplifies installation



## Energy Savings

Water injection means lower temperatures, and lower temperatures mean more efficient compression.



## Benefit from high quality features

DH compressors have significantly fewer moving parts than comparable machines, meaning there is less to go wrong, while lower speeds and balanced bearing loads extend the compression element service life for low-cost operation.

With exceptionally low running temperatures of less than 60°C, near isothermal compression is achieved.

This also eliminates the need for an internal aftercooler and the associated missing pressure drop reduces power consumption to a minimum.

“ The largest cost component of a compressor during its lifetime is the power required to run it. CompAir incorporate energy-saving technologies at every stage of the design, delivering a compressor that works harder and smarter.

## Less is more

CompAir DH - traditional oil-free technology doesn't get close.

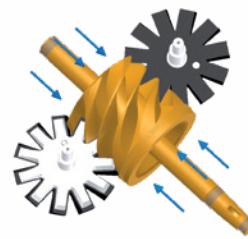
	CompAir DH	Traditional 2-stage Oil-Free
Oil	No ✓	Yes
Speed	Up to 3500rpm ✓	6000 - 25000rpm
Compression Temperature	60°C ✓	Up to 200°C
Compression Elements	1 ✓	2
Number of Gears	0 ✓	5 - 7
Number of Bearings	7 ✓	More than 15
Number of Seals	2 ✓	More than 15

## Components not needed in a DH-Series compressor

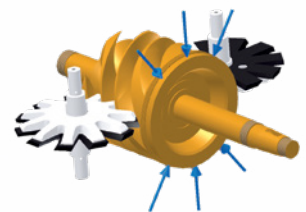
- Oil
- Oil separator
- Gearbox
- Oil removal filters
- Aftercooler
- Oil pump
- Complex seal arrangements

## Balanced Loads = Longest Life

The compression loads are balanced resulting in low bearing loads and highest reliability.



*Axial loads act on both sides of the main rotor.*



*Radial loads act on both the top and underside of the main rotor.*

## High efficiency water purification system

Tried and tested reverse osmosis filtration, provides high quality purified water to lubricate, seal and cool the compression process.



# Regulated speed technology offers maximum efficiency, cuts energy **AND** saves money



## Reduce the cost of ownership and minimise your energy consumption

The largest cost component of a compressor during its lifetime is the power required to run it.

### Perfect response to your individual air demand

Regulated speed compressors from CompAir can efficiently and reliably handle varying air demand. The right regulated speed compressor in the right application, delivers significant energy savings of up to 35% and a stable air supply at constant pressure.

Maximum efficiency at any level of demand cuts energy costs and saves money.

- Excellent efficiency
- High reliability
- Low cost of ownership

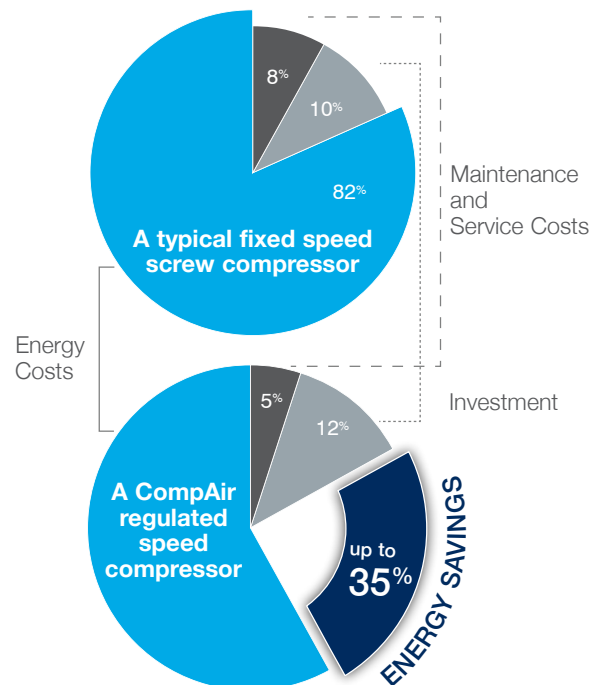


### Perfect motor - drive - airend design

The DH-RS Series features a high efficient Power Drive System that exceeds the class **IES2 EN61800-9** requirements and assures high energy savings across broad flow range.

### Wide regulation range

No cycles means substantial energy savings.



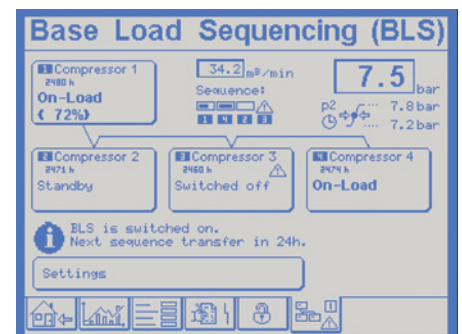
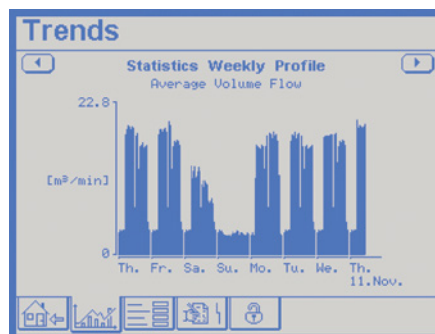
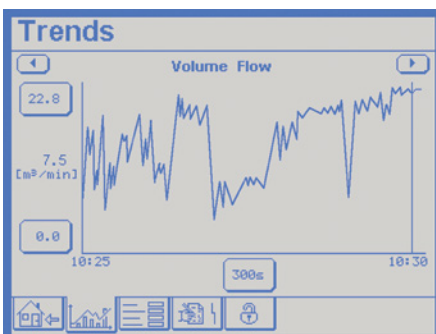
Using a regulated speed compressor can easily save 35% energy as it consumes just the energy required to do the job and no more.



## Delcos XL - Innovative touch screen compressor controller

The multilingual control system ensures safe and reliable operation and protects your investment by continuously monitoring the operational parameters - essential for reducing your running costs.

- Precise monitoring for exceptional operational reliability
- High resolution, easy-to-use touch-screen panel
- User-friendly clear structure
- Integrated SD card for in-depth analysis
- Trend diagrams for
  - Network pressure
  - Motor speed (regulated speed models)
  - On load hours / total running hours and average volume flow
  - Weekly average volume flow
- Optional base load sequencing



# Air Treatment & Condensate Management

## AirPlus



### Compressed air treatment

A modern production system and process demands increasing levels of air quality, and compressed air operators need to ensure that the downstream equipment also delivers on it 100%.

### Air Treatment Products

- ✓ Water Cyclone Separators
- ✓ Compressed Air Filters
- ✓ Condensate Drain System
- ✓ Compressed Air Refrigerant Dryer
- ✓ Heatless Desiccant Dryers
- ✓ Heat Regenerative Desiccant Dryers
- ✓ Heat-of-Compression Dryers (HOC)
- ✓ Subfreeze Dryers
- ✓ Nitrogen Generator







# Protect your investment



## Invest in your future with a Service & Warranty Agreement

Compressed air is critical to your operation. A proper maintenance strategy is crucial to avoiding unplanned, unbudgeted downtime and production interruptions. By choosing a Service agreement including an extended warranty you protect your investment.

## It All Adds Up to Peace of Mind

### Lower Cost of Ownership

Service and Warranty Agreements provide the most cost-effective solutions based on your customised maintenance strategy.

### Quality Results

Factory trained technicians allows you to focus on your core business, while they take care of your compressor system.

### Increased Uptime

Service Agreements help decrease unplanned downtime and costly production interruptions.

### Efficient Energy Use

Peak system efficiency is achieved through properly performed maintenance and inspection.

### Peace of Mind

A Service agreement ensures an extended warranty. Depends on duration.



# Predictive Maintenance




## iConn *inside*

### iConn Compressed Air Service 4.0

The DH-Series is equipped with iConn as standard. iConn is the smart, proactive real-time monitoring service that delivers in-depth and real-time knowledge on the system to compressed air users.

- ✓ Advanced remote analysis
- ✓ Predictive – evaluates historic data
- ✓ Maximises energy efficiency
- ✓ Optimises compressor performance
- ✓ Reduces downtime
- ✓ Works as an open standard
- ✓ Free on new compressors – can be retrofitted
- ✓ Proactive maintenance

**...that is why you cannot ignore iConn!**



### CompAir genuine spare parts

Genuine CompAir parts ensure that compressed air plant reliability and efficiency is maintained at the highest standards. CompAir spare parts are distinguished by:

- Long service life, even under harshest conditions
- Minimum losses contributing to energy savings
- High reliability improving plant up-time
- Products manufactured with the strictest Quality Assurance Systems





## CompAir DH - Technical Data

### Fixed Speed - Air And Water Cooled

Model	Cooling Method	Motor Rating [kW]	Working Pressure [bar g]		Free Air Delivered [m³/min]		Dimensions L x W x H [mm]	Noise Level [dB(A)**]	Weight [kg]
			min.	max.	8 bar g*	10 bar g*			
D15H	Air	15	8	10	2.30	1.80	1345 x 880 x 1612	68	672
	Water							65	624
D22H	Air	22	8	10	3.50	2.89	1345 x 880 x 1612	68	691
	Water							65	643
D37H	Air	37	8	10	5.86	5.04	1722 x 920 x 1659	71	960
	Water							61	860

### Regulated Speed - Air And Water Cooled

Model	Cooling Method	Motor Rating [kW]	Working Pressure [bar g]		Free Air Delivered [m³/min]		Dimensions L x W x H [mm]	Noise Level at 70% load [dB(A)**]	Weight [kg]
			min.	max.	min.*	max.*			
D15H RS	Air	15	5	10	0.32	2.34	1345 x 880 x 1612	67	687
	Water							64	639
D22H RS	Air	22	5	10	0.68	3.45	1345 x 880 x 1612	67	687
	Water							64	658
D37H RS	Air	37	5	10	1.09	6.87	1722 x 920 x 1659	71	995
	Water							60	895

\* Data measured and stated in accordance with ISO 1217 Edition 4, Annex C & E at the following conditions:  
Air Intake Pressure 1 bar a / 14.5 psi; Air Intake Temperature 20° C / 68° F ; Humidity 0 % (dry)

\*\* Measured in free field conditions in accordance with ISO 2151, tolerance ± 3 dB (A)



# Innovation & Engineering Excellence



A leading global manufacturer of a wide range of world-class compressed air solutions, CompAir is dedicated to providing a complete solution for our industry partners. From the latest advances in oil-free and oil-lubricated technologies to a complete range of downstream equipment, air treatment and accessories.

An extensive network of dedicated CompAir sales companies and premium partners across all continents provide global expertise with a truly local service, ensuring our advanced technology is backed up with the right support.

CompAir has consistently been at the forefront of compressed air systems development, culminating in some of the most energy efficient and low environmental impact compressors on the market today, helping customers achieve or surpass their sustainability targets.

## CompAir compressed air product range

### Advanced Compressor Technology Lubricated

- Rotary Screw
  - > Fixed and Regulated Speed
- Portable

### Oil-Free

- Water Injected Screw
  - > Fixed and Regulated Speed
- Two Stage Screw
  - > Fixed and Regulated Speed
- Rotary Scroll
- Ultima®

### Complete Air Treatment Range

- Filter
- Refrigerant and Desiccant Dryer
- Condensate Management
- Heat of Compression Dryer
- Nitrogen Generator

### Modern Control Systems

- CompAir DELCOS Controllers
- SmartAir Master Sequencer
- iConn - Smart Compressor Service

### Value Added Services

- Professional Air Audit
- Performance Reporting
- Leak Detection

### Leading Customer Support

- Custom Engineered Solutions
- Local Service Centres
- Genuine CompAir Parts and Lubricants