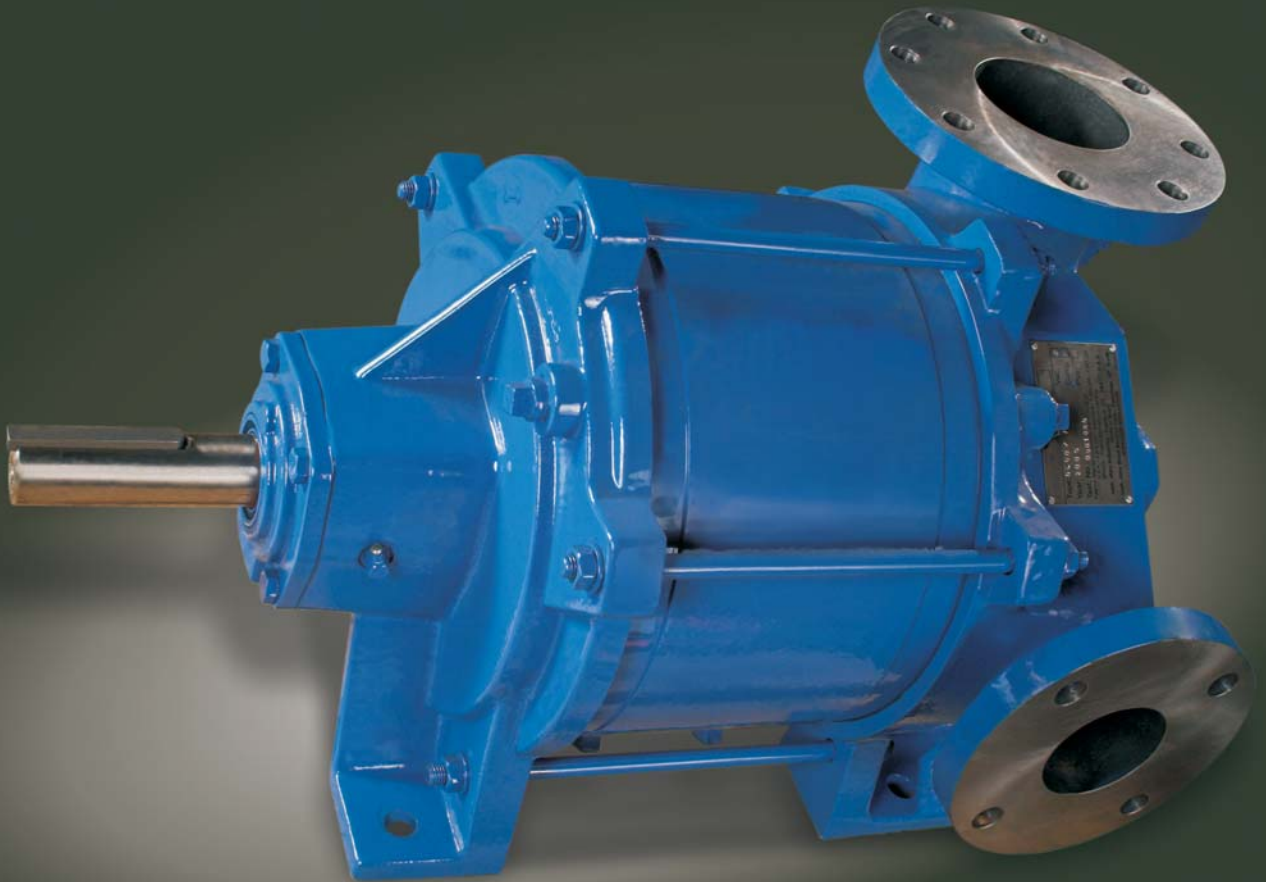


Vectra GL
Liquid Ring Vacuum Pumps and Compressors



NASH Vectra GL Vacuum Pumps & Compressors

Industry Workhorses

NASH liquid ring vacuum pumps produced by Gardner Denver Nash have been known for more than 100 years as tireless workhorses, designed to stand up to the rigorous, nonstop demands of the harshest industrial environments. Built better than industry standards, NASH pumps are known for their reliability.

Vectra GL vacuum pumps and compressors, created for a wide range of general industrial applications, combine the highest standard of this reliability with a new level of ingenuity. Gardner Denver Nash employs advanced design technologies to achieve optimum performance and unprecedented production efficiencies. As a result, Vectra GL pumps are economical and provide great value to our customers.

Designed from the ground up based on customer defined market requirements; and the input from R&D, manufacturing, marketing, and most importantly, process engineers, Vectra GL pumps are a revolutionary line of pumps tough enough to be branded NASH.

These pumps include technological advancements such as a patented cone design and rotor configuration.

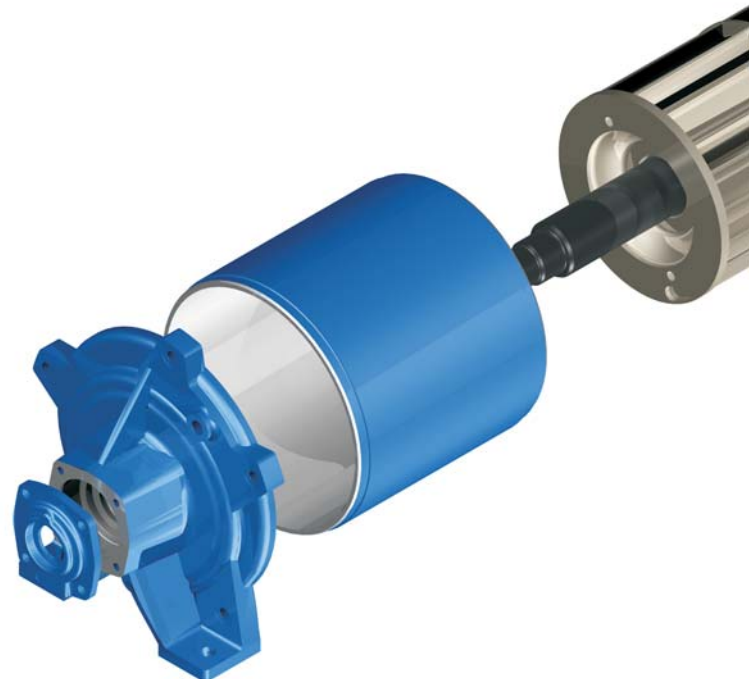
Vacuum technology for general process industry

Vectra GL pumps are designed for general industry applications. They are available in ductile iron only. Key elements of the design are the improved cone angles, which decrease the size of the pump, and NASH patented Gas Scavenging Technology, which dramatically improves pump performance at high vacuum levels.

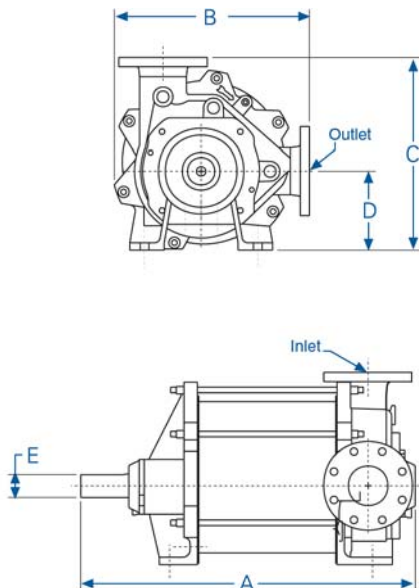
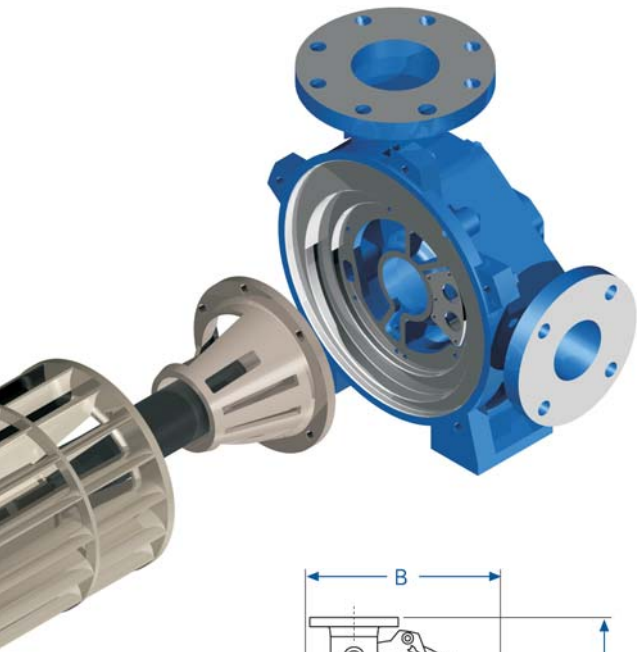
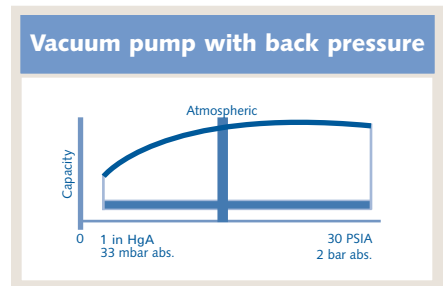
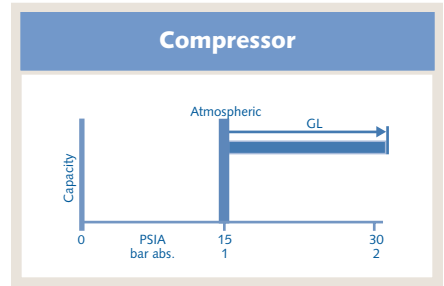
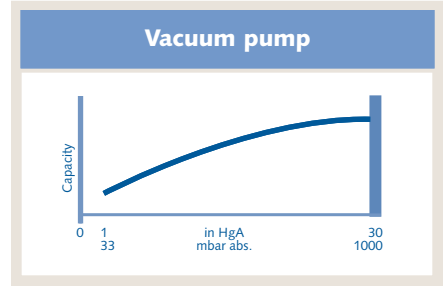
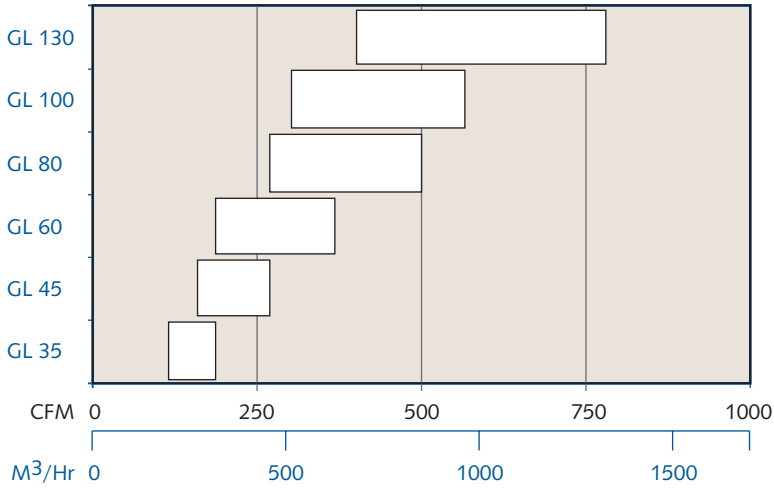
Basic specifications

Vacuum range	0-29 in Hg vac/ to 33 mbar abs.
Mechanical seals	Single
Differential pressure capability	15 psi/ 1 bar
Compressor pressure	15 psig/ 2 bar abs.
Hydrotest pressure	75 psig/ 6 bar abs. standard
Construction material	Ductile iron

Features	Benefits
Compact design	Less floor space required
Built-in mechanical seals	No shaft leakage
Global product design	Direct drive speeds for 60 Hz & 50 Hz motors
Conical design	Better ability to handle water/particulate slugs
One moving part	Long term reliability
Variable port design	High efficiency
Lobe purges	Reduce erosion wear
NASH patented Gas Scavenging	Increased performance at high vacuum levels
Redesigned cone angle	Reduced pump length
Optimum design using finite element analysis	Improved efficiency, performance and value
100% performance tested	Trouble-free start-up and operation
Backed by 2 year warranty and over 100 years of vacuum and compressed gas experience	Peace of mind



Performance



Dimensions

mm in blue

Pump	A	B	C	D	E	Inlet	Outlet
GL 35	21 533	13.4 340	14 356	6 152	1.3 32	3 in. FLG. 80mm FLG.	2 in. FLG. 50mm FLG.
GL 45	24 610	13.4 340	14 356	6 152	1.3 32	3 in. FLG. 80mm FLG.	2 in. FLG. 50mm FLG.
GL 60	27 686	17 432	16 406	6.8 173	1.6 40	4 in. FLG. 100mm FLG.	3 in. FLG. 80mm FLG.
GL 80	31 787	17 432	16 406	6.8 173	1.6 40	4 in. FLG. 100mm FLG.	3 in. FLG. 80mm FLG.
GL 100	29 737	19 483	19.5 495	8 203	1.9 48	4 in. FLG. 100mm FLG.	4 in. FLG. 100mm FLG.
GL 130	33 838	19 483	19.5 495	8 203	1.9 48	4 in. FLG. 100mm FLG.	4 in. FLG. 100mm FLG.

All dimensions are approximate

Other NASH Products

TC/TCM

Integral 2 stage liquid ring pumps with improved performance at vacuum levels down to 0.8" HgA (27 mbar)
Designed to handle large amounts of liquid carryover without difficulty
Capacity of 100 to 2,240 CFM with vacuum to 0.8" HgA
Capacity of 170 to 3,740 m³/h with vacuum to 27 mbar abs



Steam Jet Ejectors

Sizes range from one-inch (25mm) to 78-inch (2 meters) inlets
Capacities range from 20 to 20,000 CFM
Capacities range from 34 to 34,000 m³/h
Multi-stage system pressures as low as 0.001 mm HgA



2BE4/P2620

Large liquid ring vacuum pumps with superior corrosion resistance
Top discharge capability which saves space
Self-recirculating seal water, reducing need for external seal water source
Capacity of 4,000 to 23,000 CFM with vacuum to 24" HgV
Capacity of 6,800 to 39,000 m³/h with vacuum to 200 mbar abs



2BV

Compact liquid ring vacuum pumps built for serious cost savings
Use up to 50 percent less water than other liquid ring pumps
Monoblock and pedestal designs available
Capacity of 4 to 350 CFM with vacuum to 29+ " HgV
Capacity of 7 to 595 m³/h with vacuum to 31 mbar abs



Compressors

Wide range of liquid ring compressors designed for many applications. Rugged and reliable, they can handle highly toxic, explosive and corrosive gases
Specifically developed for applications such as flare-gas, Chlorine and Vinyl Chloride Monomer (VCM) recovery
Capacity of 60 to 2,200 SCFM with pressure to 200 PSIG
Capacity of 100 to 3,740 m³/h with pressure to 15 bar abs
Single and two stage models available



NASH

Div. of Gardner Denver

9 Trefoil Drive
Trumbull, CT 06611 U.S.A.
phone: 800 553 NASH
+1 203 459 3900
fax: +1 203 459 3988
nash@gardnerdenver.com
www.GDNash.com

